

## Out & About with Acquisitions

### Sarah VanDalsem, Acquisitions Chair

Each year at Convention, the Acquisition Committee is allotted funds for the purchase of glass for the National Glass Collection from the National Glass Fund. The National Glass Fund is made up of the following: Monetary donations, proceeds from the Silent Auction, and 10% of the profits from the annual convention. In addition to providing funds for the purchase of glass, the **Acquisition** Committee may use funds from these sources to purchase glass and/or supplies necessary for the processing **or display** of the Collection. We are pleased to share with you the items purchased with these funds at this year's Convention.



MacBeth Evans Red American Sweetheart Plate/Salver Large



Imperial Cape Cod Decanter with Decoration



Hazel-Atlas Green Cloverleaf Footed Tumbler



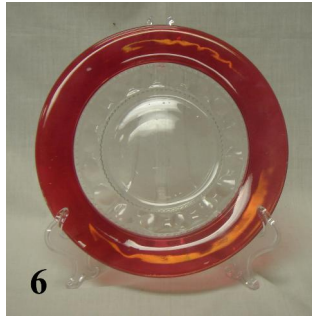
Jeanette Green Floral "Poinsettia" Flat Tumbler



Fostoria Orchid Grape Brocade Compote

*(Continued on page 10)*

*(Continued from page 9)*



Indiana King's Crown Dinner Plate



Hocking Crystal Old Colony "Open Lace" Fish Bowl



New Martinsville Red Radiance Cordial Set



Paden City Crystal Starfish Bookends



Central Glass Opalescent 4 Piece Console Set from Tom Smith's Collection



Cambridge Ivory Century Silver Plate Ivory Samovar

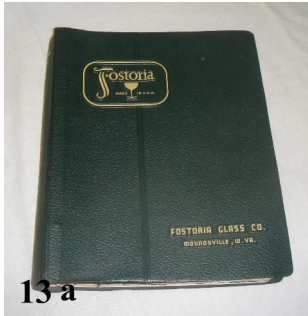
*(Continued on page 11)*

(Continued from page 10)

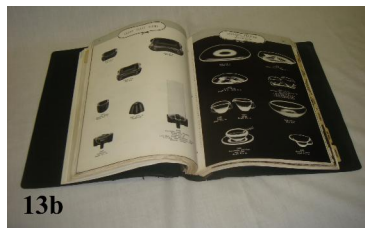
Possibly Paden City Blue Samovar Set



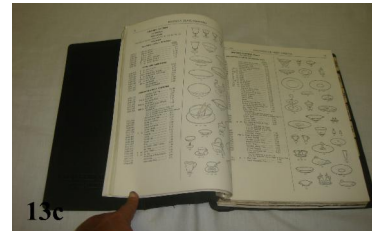
12



13 a



13b



13c

Fostoria Dealer's Catalog 1959

The Ochs Endowment Fund was established in July, 2003 so that there would always be money to purchase glass. Interest earned on the principal in this fund is to be used to purchase glass for the Collection. The Acquisition Committee is allotted the yearly interest earned to purchase glass. In 2009, the Ochs Endowment Fund was invested in a 4 year CD which matured this year, and the interest was available to purchase glass at this year's Convention. We are pleased to add these special items to the National Glass Collection.



1

Fostoria Amethyst American Hat Vase



2

Cambridge Moonlight Bashful Charlotte Flower Frog

(Continued on page 12)

*(Continued from page 11)*



Duncan & Miller Black Cologne/Perfume



Pairpoint Blue Plate



Cambridge Carmen Tally Ho Goblet with Silver Overlay Decoration



Viking Blue Artichoke Flower Frog



Cambridge Moonlight Caprice Rose Bowl with Flower Frog from Jim Rose's collection

We wish to thank the dealers whose generosity made it possible for us to add so many beautiful items to the National Glass Collection. We also wish to express our gratitude to all of those who made donations to the National Glass Collection during Convention and will share some of those in future issues.

Sarah VanDalsem  
Acquisitions Chair